

PRO-Clean

Rapid Protein Residue Test

Part No: PRO-100 (100 tests)



Description/ Intended Use:

PRO-Clean is a ready-to-use rapid protein residue detection device for testing a surface after cleaning. PRO-Clean will turn from green to purple if protein is present in a sample. The more protein collected, the quicker and darker the color change. PRO-Clean is intended to provide rapid validation of surface hygiene and show due diligence in a HACCP program. PRO-Clean will also detect other reducing substances such as simple sugars, tannin, and ascorbic acid.

Note: PRO-Clean is designed to detect invisible/trace amounts of residue. Overloading the swab with physical matter by swabbing a visibly dirty surface will inhibit the reaction and produce inaccurate results.

Directions:

Instructional Video: www.youtube.com/HygienaTV

1. Allow PRO-Clean to equilibrate to room temperature (21 – 25 °C) before use. Holding swab tube firmly, twist and pull top of swab out of swab tube. Condensation may be visible on inside of swab tube; this is normal. Swab tip is pre-moistened for maximum sample collection. Thoroughly swab a standard 10 x 10 cm (4 x 4 inches) area for a typical flat surface. For irregular surfaces, ensure swabbing technique remains consistent for each test and swab a large enough area to collect a representative sample.

Important swabbing technique tips:

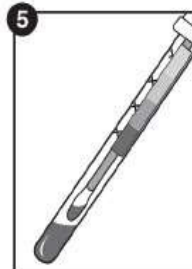
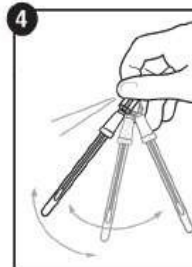
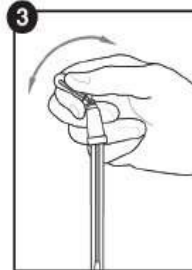
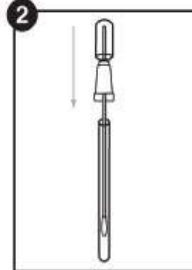
- Do not touch swab or inside of sample device with fingers.
- Rotate swab while collecting sample to maximize sample collection on swab tip.
- Apply sufficient pressure to create flex in swab shaft.
- Swab in a crisscross pattern vertically, horizontally, and in both diagonal directions.
- Refer to instructional video for demonstration: www.youtube.com/HygienaTV

2. After swabbing, replace swab back in swab tube.
3. To activate device, hold swab tube firmly and use thumb and forefinger to break Snap-Valve by bending bulb forward and backward. Squeeze bulb twice, expelling all liquid down swab shaft.
4. Bathe swab bud in liquid by shaking for 5 – 10 seconds.
5. Wait 10 minutes at room temperature for color change. Most color changes take place in less than 60 seconds. After 10 minutes, compare color of reagent against PRO-Clean color chart on tube label and record result. Refer to Interpretation of Results below.

Interpretation of Results:

Color of PRO-Clean solution and time in which color change takes place will indicate protein residue levels in sample. By comparing color of solution against chart on PRO-Clean tube label, an estimate of surface cleanliness can be made. There is no need to continue timing if color changes to purple before 10 minutes.

- Green = Pass result. Clean, no further action required.
- Grey = Caution. Small amount of residue present; Re-test, re-rinse, or re-clean, depending on protocol.
- Purple = Fail result. Re-clean and re-test.



Sensitivity:

- At room temperature (21 – 25 °C):
 - 80 µg after 1 minute
 - 50 µg after 5 minutes
 - 20 µg after 10 minutes

Sanitizer Information:

Common sanitizers at normal concentrations do not cause interference or false-positives. High concentrations of alkaline sanitizers may cause false-negative results in some cases. Peroxide based disinfectants can cause a false-positive color change reaction. It is best practice to wait appropriate time after sanitizing before testing a surface with PRO-Clean. Sanitation is usually a two-step process involving detergent cleaning and subsequent (optional) disinfection. To ensure best results, collect PRO-Clean sample after detergent and rinsing steps, but prior to any terminal disinfection. Product residues left on a surface after detergent cleaning reduces effectiveness of disinfection. Testing prior to disinfection prevents wasted chemicals and time and ensures optimum test performance in a food safety program. If testing prior to disinfection/sanitization is not possible, observe proper dwell time before using PRO-Clean.

Storage & Shelf Life:

- Store at 2 – 25 °C (36 – 77 °F)
- Devices have an 18-month shelf life. Check expiration date on label.

Disposal:

PRO-Clean devices are made of 100% recyclable plastic and may be discarded accordingly.

Safety & Precautions:

- Components of PRO-Clean do not pose any risk to health when used in accordance with standard laboratory practices and procedures in this insert.
- For further safety instruction, refer to Safety Data Sheet (SDS).

Hygiena Liability:

Hygiena will not be liable to user or others for any loss or damage whether direct or indirect, incidental or consequential from use of this device. If this product is proven to be defective, Hygiena's sole obligation will be to replace product or at its discretion, refund the purchase price. Promptly notify Hygiena within 5 days of discovery of any suspected defect and return product to Hygiena. Please contact Customer Service for a Returned Goods authorization number.

Contact Information:

Distributed by Emport LLC

Interested in auto-shipments?
Other products? Contact us!

orders@emportllc.com
412-447-1888 or 866-509-4482