



AllerSnap®

Rapid Protein Residue Test

Product No. ALS-100 (100 tests)

Introduction

Description and Intended Use

AllerSnap® is a ready-to-use, high-sensitivity, rapid test for detection of protein residues on surfaces after cleaning. AllerSnap will turn from green to purple if protein is present in a sample. The more protein collected in a sample, the quicker and darker the color change. AllerSnap is intended to be used for rapid verification of surface cleanliness.

AllerSnap will also detect other reducing substances such as simple sugars, tannin and ascorbic acid.

Note: AllerSnap is designed to detect invisible/trace amounts of residue. Overloading the swab with physical matter by swabbing a visibly dirty surface will inhibit the reaction and produce inaccurate results.

Important Tips and Notes Before Starting the Test

- Allow the AllerSnap device to equilibrate to room temperature (21 to 25 °C) before use.
- The swab tip is pre-moistened for maximum sample collection.
- Condensation may be visible on the inside of the swab tube; this is normal.

Materials & Equipment Required

- Incubator set to 37 °C (e.g. INCUBATOR, INCUBATOR2)
- Timer

Test Procedure

Instructional video: <https://vimeo.com/manage/videos/202839640>

1. Allow AllerSnap to equilibrate to room temperature (21 to 25 °C) before use. Holding swab tube firmly, twist and pull top of swab out of swab tube. Condensation may be visible on inside of swab tube; this is normal. Swab tip is pre-moistened for maximum sample collection.
2. Thoroughly swab a standard 10 x 10 cm (4 x 4 inches) area for a typical flat surface. For irregular surfaces, ensure swabbing technique remains consistent for each test and swab a large enough area to collect a representative sample.

Important swabbing technique tips:

- Do not touch swab or inside of sample device with fingers.
- Rotate swab while collecting sample to maximize sample collection on swab tip.
- Apply sufficient pressure to create flex in swab shaft.
- Swab in a crisscross pattern vertically, horizontally, and in both diagonal directions.

Refer to instructional video for demonstration.

3. After swabbing, replace swab back in swab tube.



4. To activate device, hold swab tube firmly and use thumb and forefinger to break Snap-Valve by bending bulb forward and backward. Squeeze bulb twice, expelling all liquid down swab shaft.

Important: Liquid at the bottom of the device should initially turn green (a baseline green color). If no green color is seen, please contact [technical support](#).

5. Bathe swab bud in liquid by shaking for 5 – 10 seconds.

6. Incubate at 37 °C for 30 minutes.

7. After time is complete, compare the solution color against the AllerSnap color chart on tube label and record result. Refer to Interpretation of Results below.

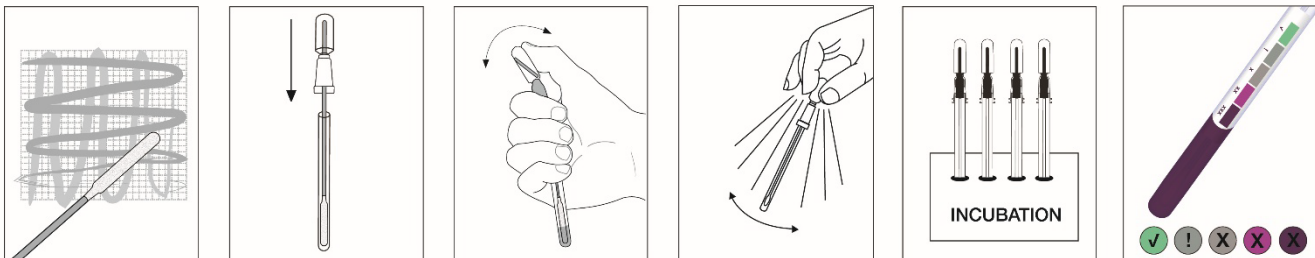
Additional Information

Interpretation of Results

The color of the AllerSnap solution and the time in which color change takes place will indicate protein residue levels in the sample. By comparing the solution color against the chart on the AllerSnap tube label, an estimate of surface cleanliness can be made. There is no need to continue incubation if the color changes to purple before the testing time is complete.

Note: Liquid in the bottom of the tube should initially look green, if not, the test will be invalid. Please contact technical support if this occurs.

- Green = Pass result. Clean, no further action required.
- Grey = Caution. Small amount of residue present; Re-test, re-rinse, or re-clean, depending on protocol.
- Purple = Fail result. Re-clean and re-test.



Caution & Reminders

At very low protein levels, when color intensity is weak (grey), care should be taken when interpreting results. Green-grey or any green color should be regarded as a negative for protein; therefore, a Pass result. Comparison with a negative control (activated without sample collection, incubated at same time and temperature) could also be conducted for reference.

Important Reminders

- After activation, the AllerSnap® device should exhibit a **green baseline color**.
- A **valid negative (pass) result** is indicated by the solution remaining **green after activation**.
- If the device appears **clear or any color other than green after activation**, this may indicate an abnormal or positive result.



Sensitivity

37 °C for 30 minutes = 3 µg protein

Protein content (µg BSA)	Time at 37 °C			
	5	10	15	30
10	✓	✓	✓	✓
5		✓	✓	✓
3				✓

Sanitizer Information

Common sanitizers at normal concentrations do not cause interference or false-positive results. High concentrations of alkaline sanitizers may cause false-negative results in some cases. Peroxide-based disinfectants can cause a false-positive color change reaction. It is best practice to wait the appropriate time after sanitizing before testing a surface with AllerSnap. Sanitation is usually a two-step process involving detergent cleaning and subsequent (optional) disinfection. To ensure the best results, collect the AllerSnap sample after detergent and rinsing steps, but prior to any terminal disinfection. Product residues left on a surface after detergent cleaning reduce the effectiveness of disinfection. Testing prior to disinfection prevents wasted chemicals and time and ensures optimum test performance in a food safety program. If testing prior to disinfection/sanitization is not possible, observe proper dwell time before using AllerSnap.

Storage and Shelf Life

- For maximum shelf life, store at 2 to 25 °C (36 to 77 °F).
- Lot number and expiration date are printed on each device and product label.
- Do not use past the expiration date on the label.

Disposal

AllerSnap devices are made of 100% recyclable plastic and may be discarded accordingly.

Safety and Precautions

- Components of AllerSnap devices do not pose any health risk when used in accordance with standard laboratory practices and procedures of this insert.
- AllerSnap test devices are for one-time use. Do not reuse.
- For further safety instructions, refer to the Safety Data Sheet (SDS).

Hygiena Liability

Hygiena will not be liable to user or others for any loss or damage, whether direct or indirect, incidental or consequential from use of these devices. If this product is proven to be defective, Hygiena’s sole obligation will be to replace the product or at its discretion, refund the purchase price. Promptly notify Hygiena within 5 days of discovery of any suspected defect and return the product to Hygiena; please contact Customer Service for a Returned Goods Authorization Number.

Contact Information

For more information, visit www.hygiena.com/contact. For technical support, visit www.hygiena.com/support.